

# Techno-Nav!

## テクノナビ

## ! Auxiliary device connection Available models: SEEV-A/SEEV-A-HD



### Overview

IMM has Input/Output signals for injection, mold open/close, ejection, core pull to communicate with auxiliary devices.

### Configuration

#### ■ Signals from IMM to auxiliary devices

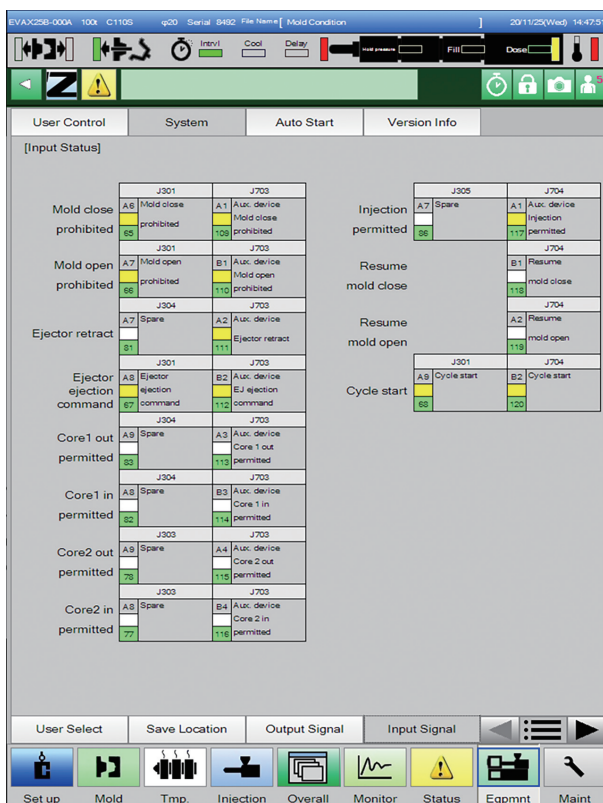
Signal selection : Additional 7 items available  
Signal channel : Additional 15ch available (STD: 5ch) -> Total : 20ch  
Specifications : IMM provides dry A contact or DC24V at additional 15ch.

#### ■ Signals from auxiliary devices to IMM

Signals : Auxiliary devices can control IMM operation as injection, mold open/close, ejection and core pull.  
Specifications : Dry A contact only

No.	Additional output signals
1	Safety door close
2	Core return end
3	Core forward end
4	Core2 return end
5	Core2 forward end
6	Nozzle touch complete
7	Holding pressure process end

### Screen



#### ■ Input signal confirmation screen

IMM shows input signal status on the screen.

No.	Additional input signals
1	Mold close prohibited
2	Mold open prohibited
3	Ejector retract
4	Ejector ejection command
5	Core out permitted
6	Core in permitted
7	Core2 out permitted
8	Core2 in permitted
9	Injection permitted
10	Resume mold close
11	Resume mold open
12	Cycle start

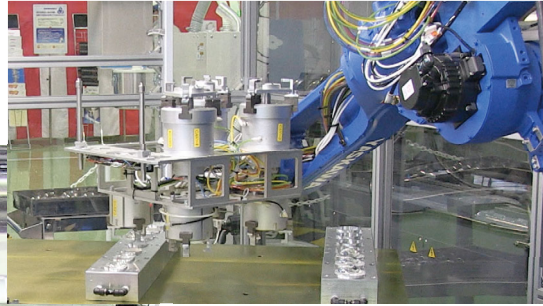
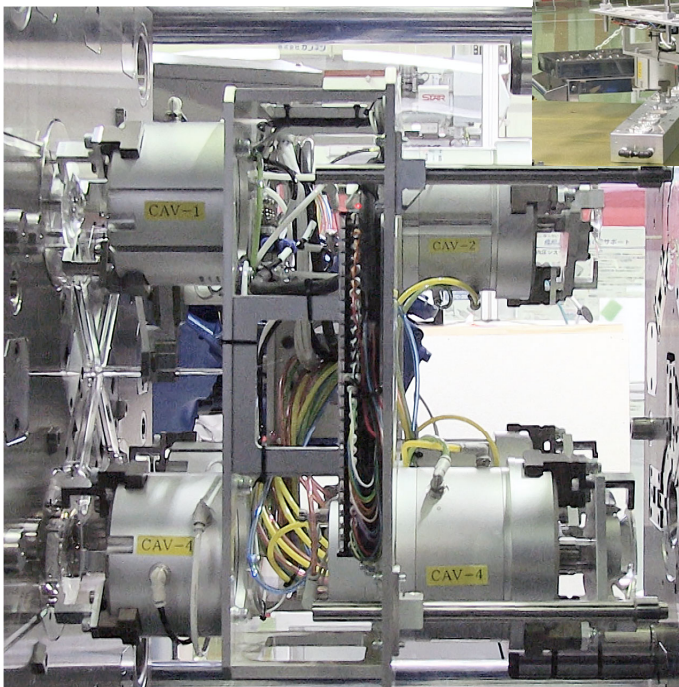
Example of Use

Continued on the back side ▶▶

### Example of Use

When IMM runs with robot or other devices, proper interlock signals provides followings. Safety and flexibility for equipment / Good quality and stability for product.

#### Insert molding+Core pull



#### Before

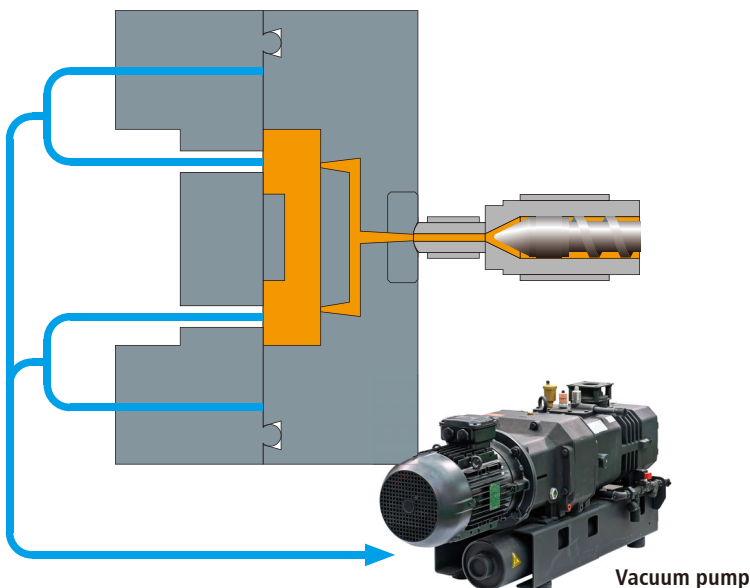
The core works after the robot places the insert in the mold. The core pin is sometimes broken by improper insert position.



#### Auxiliary device connection

When the insert is placed at proper position, the robot provides "core in permitted" signal to IMM. This prevents mold damage by insert problem.

#### Vacuum Molding



#### Before

The vacuum pump works after IMM pauses mold close. After mold close pause timer counts up, IMM locks up the mold and injects melt resin. However you can not find that desired vacuum level is achieved or not.



#### Auxiliary device connection

IMM locks up the mold after vacuum gage provides confirmation signal to IMM. So you can reduce bad products by desired vacuum level.